

OVERVIEW



1. Power button	5. 2x USB-C (USB 5Gbps), USB PD 3.0 & DP 1.4
2. USB-A (USB 5Gbps)	6. HDMI
3. USB-A (USB 5Gbps), Always On	7. Headphone / microphone combo jack (3.5mm)
4. microSD card reader	

PERFORMANCE

Processor

Processor Family

AMD Ryzen™ 5 / 7 Processor

Processor\*\*

Processor Name	Cores	Threads	Base Frequency	Max Frequency	Cache	Processor Graphics
AMD Ryzen™ 5 7530U	6	12	2.0GHz	4.5GHz	3MB L2 / 16MB L3	AMD Radeon™ Graphics
AMD Ryzen™ 7 7730U	8	16	2.0GHz	4.5GHz	4MB L2 / 16MB L3	AMD Radeon™ Graphics

Operating System

Operating System\*\*

- Windows® 11 Pro
- Windows® 11 Home
- Windows® 11 Home Single Language
- No preload operating system

Graphics

Graphics

Graphics	Type	Memory	TGP	Key Features
AMD Radeon™ Graphics	Integrated	Shared	Share CPU TDP	DirectX® 12

Monitor Support

Monitor Support

Supports up to 3 independent displays (native display and 2 external monitors via HDMI® and USB-C®)

- HDMI® supports up to 3840x2160@60Hz
- USB-C® supports up to 3840x2160@60Hz

Chipset

Chipset

AMD SoC (System on Chip) platform

Memory

Max Memory

- 8GB soldered memory, not upgradable
- 16GB soldered memory, not upgradable

Memory Slots

Memory soldered to systemboard, no slots, dual-channel

Memory Type

LPDDR4x-4266

Storage

Storage Support<sup>[1]</sup>

One drive, up to 1TB M.2 2242 SSD

Storage Slot

One M.2 2242 PCIe® 3.0 x4 slot

Storage Type<sup>[2]</sup>

Disk Type	Interface	Offering
M.2 2242 SSD	PCIe® NVMe®, PCIe® 4.0 x4	256GB / 512GB / 1TB

Notes:

[1] The storage capacity supported is based on the test results with current Lenovo® storage offerings.

[2] PCIe® 4.0x4 is downgraded to be closer to PCIe® 3.0x4 due to the system slot limitation.

Removable Storage

Card Reader

microSD card reader

Multi-Media

Audio Chip

High Definition (HD) Audio, Realtek® ALC3287 codec

Speakers

Stereo speakers, 2W x2, optimized with Dolby Atmos®

Microphone

Dual-microphone array

Camera

FHD 1080p + IR, with privacy shutter, fixed focus

Sensor

Sensors

- Accelerometer (G) sensor
- Giant magnetoresistance (GMR)

Battery

Battery

Integrated Li-Polymer 59Wh battery, supports Rapid Charge Boost (get 2 hours of runtime with a 15-minute charge)<sup>[1]</sup>

Max Battery Life<sup>[2]</sup>

MobileMark® 2018@200nits: 12.5 hr

Local video (1080p) playback@150nits: 17 hr

Notes:

[1] Rapid Charge Boost is only effective in hibernates or fully shutting down the computer.

[2] All battery life claims are approximate maximum and based on results using the MobileMark® 2014, MobileMark® 2018, MobileMark® 25, MobileMark® 30, JEITA 2.0, JEITA 3.0, continuous 1080p video playback (with 150nits brightness and default volume level) or Google Power Load Test (PLT) battery-life benchmark tests. Actual battery life will vary depending on many factors such as product configuration and usage, software use, wireless functionality, power management settings, and screen brightness. The maximum capacity of the battery will decrease with time and use.

Power Adapter

Power Adapter

45W USB-C® (3-pin) AC adapter, supports PD 3.0, 100-240V, 50-60Hz

DESIGN

Display

Display<sup>[1]</sup>

Size	Resolution	Touch	Type	Brightness	Surface	Aspect Ratio	Contrast Ratio	Color Gamut	Refresh Rate	Viewing Angle (L/R/U/D)	Key Features
13.3"	WUXGA (1920x1200)	Multi-touch	IPS	300nits	Glossy	16:10	1,000:1	100% sRGB	60Hz	85° / 85° / 85° / 85°	Dolby Vision®, TÜV Low Blue Light (Software)

Touchscreen

OGM (One Glass Metal mesh) multi-touch, supports 10-point touch

Notes:

[1] IPS (in-plane switching) technology may refer to IPS, PLS, ADS, AHVA, AAS.

Multi-mode

Multi-mode

Laptop, tent, stand, and tablet modes supported by 360° hinge

Input Device

Pen\*\*

- Lenovo® Digital Pen with replaceable AAAA alkaline battery, 4096 levels of pressure sensitivity. For more information, please read [Lenovo® Digital Pen Overview](#)
- Lenovo® Digital Pen without replaceable AAAA alkaline battery, 4096 levels of pressure sensitivity. For more information, please read [Lenovo® Digital Pen Overview](#)
- No pen (purchase separately)

Keyboard

6-row, multimedia Fn keys

Keyboard Backlight

LED backlight

Touchpad

Buttonless glass surface multi-touch touchpad, supports Precision TouchPad (PTP), 75 x 120 mm (2.95 x 4.72 inches)

Mechanical

Dimensions (WxDxH)<sup>[1]</sup>

Models	Dimensions
Aluminium models	304 x 218 x 17.45 mm (11.97 x 8.58 x 0.69 inches)
Fabric models	304 x 218 x 17.36 mm (11.97 x 8.58 x 0.68 inches)

Weight<sup>[2]</sup>

Models	Weight
Models with aluminium	Starting at 1.37 kg (3.02 lbs)
Models with fabric	Starting at 1.39 kg (3.06 lbs)

Case Color

Dark teal

Surface Treatment\*\*

- Aluminium stamping (anodized)
- Fabric

Case Material\*\*

- Aluminium (top), PC-ABS (bottom)
- Fabric + aluminium (top), PC-ABS (bottom)

Notes:

[1] The system dimensions may vary depending on configurations.

[2] The system weight is approximate and based on results in Lenovo® lab, which varies depending on the source of component, variance of the distribution of each component, and manufacturing process. It may not be the exact weight for each specific model.

CONNECTIVITY

Network

Ethernet

No onboard Ethernet

WLAN + Bluetooth<sup>[1]</sup>

Wi-Fi® 6, 802.11ax 2x2 Wi-Fi® + Bluetooth® 5.3, M.2 card

WWAN

No support

---

Notes:

[1] Wi-Fi® 6 full features might be limited by country-level restrictions.

Bluetooth® 5.3 operation requires Windows® 11. For more information please visit [General Bluetooth® Support Information on Microsoft®](#).

## Ports<sup>[1]</sup>

### Standard Ports

- 1x USB-A (USB 5Gbps / USB 3.2 Gen 1)
- 1x USB-A (USB 5Gbps / USB 3.2 Gen 1), Always On
- 2x USB-C® (USB 5Gbps / USB 3.2 Gen 1), with USB PD 3.0 and DisplayPort™ 1.4
- 1x HDMI® 2.1, up to 4K/60Hz
- 1x Headphone / microphone combo jack (3.5mm)
- 1x microSD card reader

---

Notes:

[1] The transfer speed of the ports will vary and, depending on many factors, such as the processing speed of the host device, file attributes and other factors related to system configuration and your operating environment, will be slower than theoretical speed.

## Docking

### Docking

Various docking solutions are supported via USB-C®.

For more compatible docking solutions, please visit [Docking for Yoga® 6 13ABR8](#)

## SECURITY & PRIVACY

### Security

#### Security Chip

Firmware TPM 2.0 integrated in SoC

#### Fingerprint Reader

Touch style fingerprint reader on palm rest

#### BIOS Security

- Administrator password
- Master hard disk password
- User hard disk password
- User password
- Self-healing BIOS
- More BIOS security features, please visit [BIOS Simulator<sup>\[1\]</sup>](#)

#### Other Security

- Camera privacy shutter
- IR camera for Windows® Hello (facial recognition)

---

Notes:

[1] The BIOS simulator is just for reference. Default settings and some options may vary depending on the hardware, operating system and BIOS version.

## SERVICE

### Warranty

#### Base Warranty\*\*

- 1-year courier or carry-in service
- 1-year courier or carry-in with 2-year system board service (Korea only)
- 2-year (1-yr battery) courier or carry-in service
- 3-year (1-yr battery) courier or carry-in service

## ACCESSORIES

## Bundled Accessories

### Bundled Accessories<sup>[1]</sup>

None

Notes:

[1] For more compatible accessory solutions, please visit [Accessories for Yoga® 6 13ABR8](#).

## OPERATING REQUIREMENTS

### Operating Environment

#### Temperature<sup>[1]</sup>

- At altitudes up to 2438 m (8,000 ft)
  - Operating: 5°C to 35°C (41°F to 95°F)
  - Storage: 5°C to 43°C (41°F to 109°F)
- At altitudes above 2438 m (8,000 ft)
  - Maximum temperature when operating under the unpressurized condition: 31.3°C (88°F)

#### Relative Humidity

- Operating: 8% to 95% at wet-bulb temperature 23°C (73°F)
- Storage and transportation: 5% to 95% at wet-bulb temperature 27°C (81°F)

#### Altitude

Maximum altitude (without pressurization): 3048 m (10,000 ft)

Notes:

[1] When you charge the battery, its temperature must be no lower than 10°C (50°F).

## CERTIFICATIONS

### Green Certifications<sup>[1]</sup>

#### Green Certifications<sup>[2]</sup>

- ENERGY STAR® 8.0
- EPEAT™ Gold Registered<sup>[3]</sup>
- ErP Lot 6/26
- RoHS compliant

Notes:

[1] The items listed under the "Green Certifications" section may not only refer to certification but also registration or self-declaration. For ESG & regulatory compliance documents, please visit <https://compliance.lenovo.com>.

[2] EPEAT™ registration and ENERGY STAR® certification are optional and only available on the models with preloaded OS. Please visit [epeat.net](https://epeat.net) and [energystar.gov](https://energystar.gov) for more information.

[3] EPEAT™ is registered where applicable, please visit [epeat.net](https://epeat.net) for registration status by country.

### Other Certifications

#### Mil-Spec Test

MIL-STD-810H military test passed

#### Other Certifications

TÜV Rheinland® Low Blue Light (Software Solution)

- Feature with \*\* means that only one option listed under the feature can be configured on selected models. Please refer to the model configuration for specific information.
- Lenovo reserves the right to change specifications or other product information without notice. Lenovo is not responsible for photographic or typographical errors. LENOVO PROVIDES THIS PUBLICATION "AS IS," WITHOUT WARRANTY OF ANY KIND, EITHER EXPRESS OR IMPLIED, INCLUDING THE IMPLIED WARRANTIES OF MERCHANTABILITY OR FITNESS FOR A PARTICULAR PURPOSE. Some jurisdictions do not allow disclaimer of express or implied warranties in certain transactions, therefore this disclaimer may not apply to

- you.
- The specifications on this page may not be available in all regions, and may be changed or updated without notice.



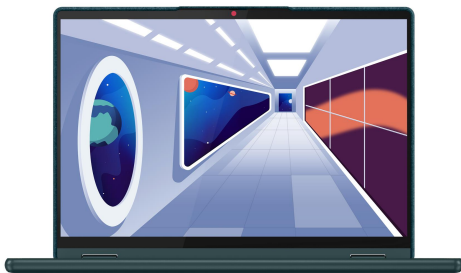
AMD



AMD



AMD



AMD



AMD



AMD